

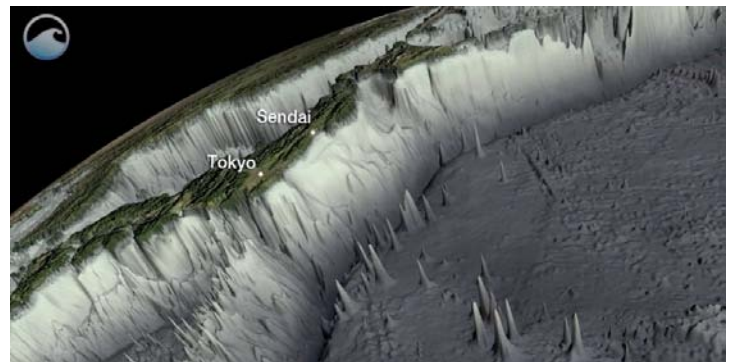
Tsunami Strikes Japan

Name _____ Date _____

Directions: Write your responses on this sheet or on separate paper.

1. How are earthquakes and tsunamis related?
2. How are tsunami waves different from normal ocean waves?
3. What happens to tsunami waves as they reach the shallow waters near a coastline?

4. How did the geography of Japan's coastline affect the size of the tsunami waves that struck that nation in 2011?



5. Do you think people can stop a tsunami or prevent its waves from forming?
Propose at least one new idea.